



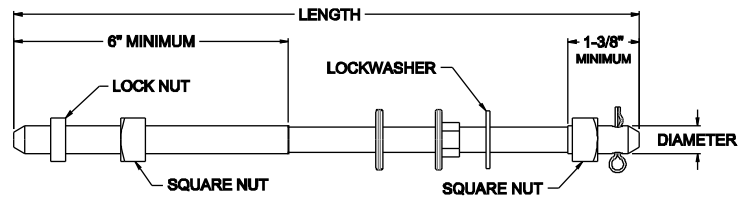
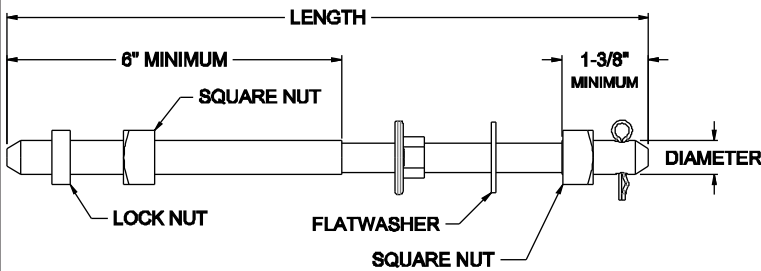
ALUMA-FORM®

Pole Line Hardware

Upset Bolts - Single & Double

Features

- Supplied Assembled with Square Nut
- Rolled Threads
- Forged
- Cone points
- Hot dip galvanized to meet ASTM A153



5/8" Diameter		13,550 lbs - Minimum Tensile Strength			
Catalog Name	Description	Length	Thread Length	Weight per 100	Box QTY
AF2341-1/2	5/8" X 7" SINGLE UPSET SPOOL	7"	6" & 1-3/8"	123	25
AF2342-1/2	5/8" X 8" SINGLE UPSET SPOOL	8"	6" & 1-3/8"	135	25
AF2343-1/2	5/8" X 9" SINGLE UPSET SPOOL	9"	6" & 1-3/8"	142	25
AF2344-1/2	5/8" X 10" SINGLE UPSET SPOOL	10"	6" & 1-3/8"	149	25
AF2346-1/2	5/8" X 12" SINGLE UPSET SPOOL	12"	6" & 1-3/8"	162	25
AF2348-1/2	5/8" X 14" SINGLE UPSET SPOOL	14"	6" & 1-3/8"	176	25
AF2350-1/2	5/8" X 16" SINGLE UPSET SPOOL	16"	6" & 1-3/8"	190	25
AF2352-1/2	5/8" X 18" SINGLE UPSET SPOOL	18"	6" & 1-3/8"	203	25
AF2354-1/2	5/8" X 20" SINGLE UPSET SPOOL	20"	6" & 1-3/8"	217	25

5/8" Diameter		13,550 lbs - Minimum Tensile Strength			
Catalog Name	Description	Length	Thread Length	Weight per 100	Box QTY
AF2394	5/8" X 8" DOUBLE UPSET SPOOL	8"	6" & 1-3/8"	154	25
AF2395	5/8" X 9" DOUBLE UPSET SPOOL	9"	6" & 1-3/8"	162	25
AF2396	5/8" X 10" DOUBLE UPSET SPOOL	10"	6" & 1-3/8"	169	25
AF2398	5/8" X 12" DOUBLE UPSET SPOOL	12"	6" & 1-3/8"	183	25
AF2400	5/8" X 14" DOUBLE UPSET SPOOL	14"	6" & 1-3/8"	198	25